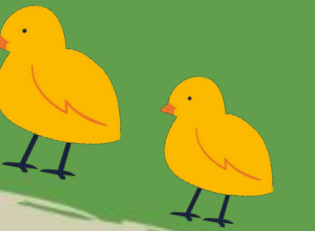
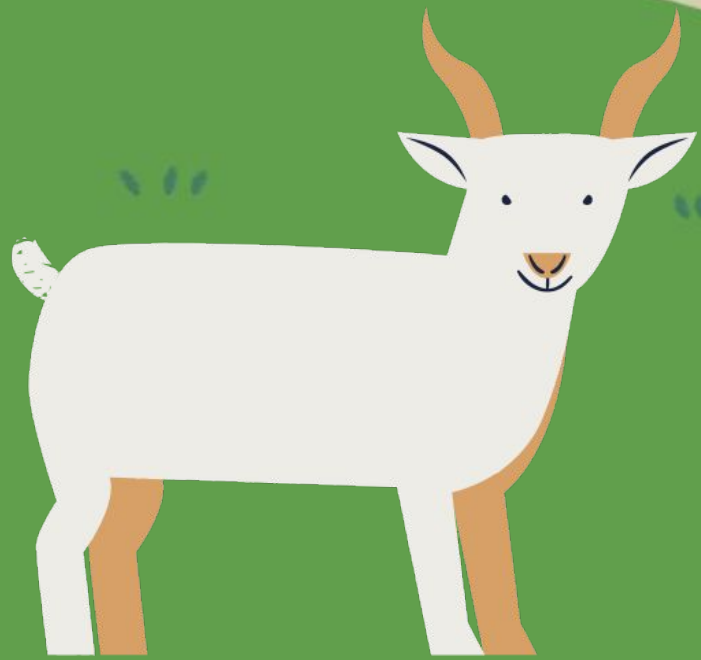


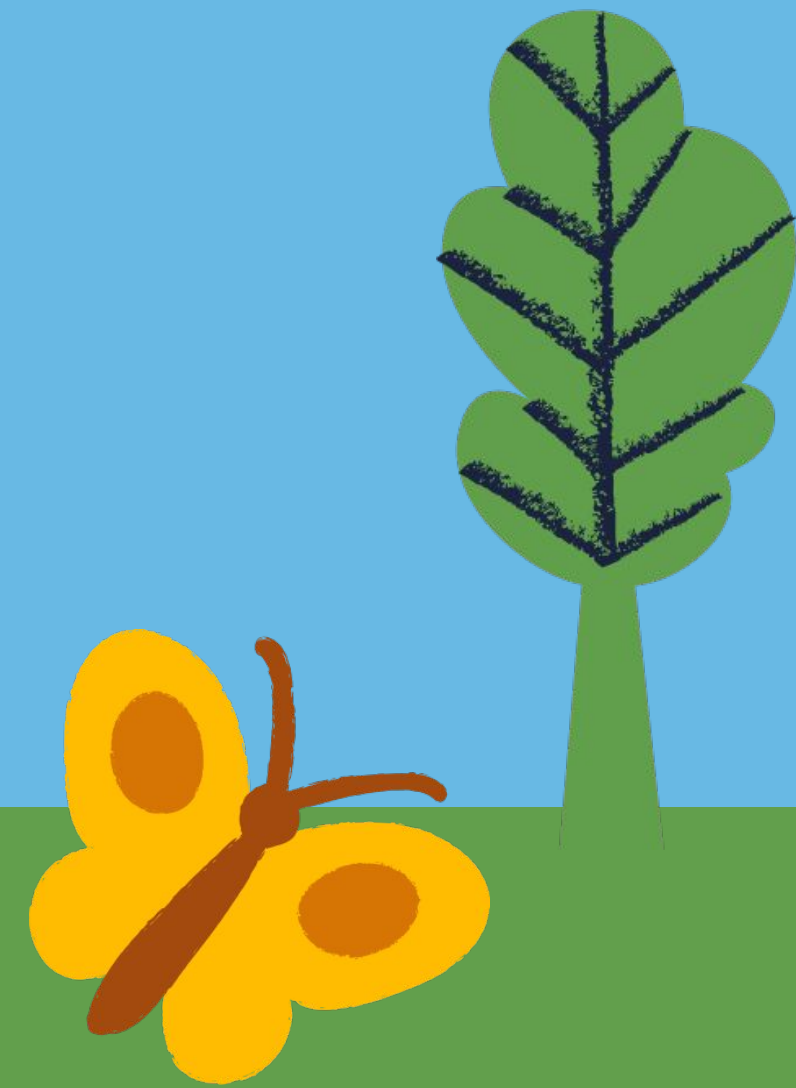
Raising An Animal Project For Show

2024-2025

Manor Ag.
Science Dept.



At this point, we can **NOT** guarantee what will happen with the stock shows or the MISD Project Facility.



You are purchasing animals at
YOUR OWN RISK.



The Ag Team

Ag Teachers:

Mrs. Bartos

Mrs. Franklin

Mr. MacDonald

Mr. Shue

Mrs. Tucker

Barn Monitor:

Mr. Vest

FFA Advisors:

Mrs. Bartos

Mr. MacDonald

Mrs. Tucker

CCMR/CTE Director:

Mrs. Hill



Why should you show?

Scholarships!

College opportunities!

Responsibility!

Life experiences!

Awards!

Meet new friends!

Fun!

Traveling opportunities!



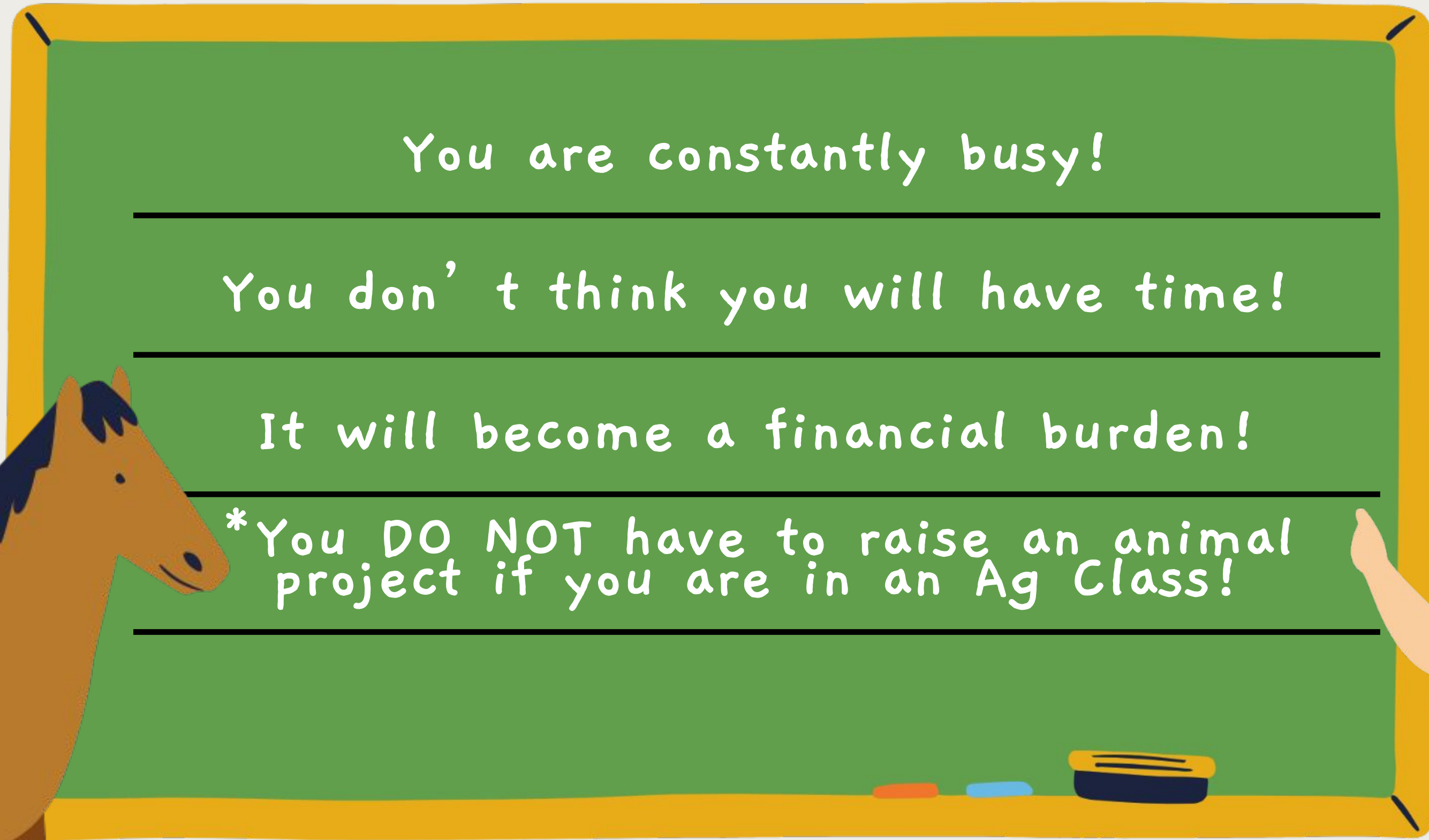
Why shouldn't you show?

You are constantly busy!

You don't think you will have time!

It will become a financial burden!

*You DO NOT have to raise an animal project if you are in an Ag Class!



FFA Membership

Required for all members that show animals or youth fair projects

Parents are encouraged to become active members of the Manor FFA Alumni - they are one of our biggest supporters

Must have Social Security #

Who is eligible?

FFA member (\$0) - 8th-12th grade

Jr. FFA (\$10) - 3rd-7th grade

Junior FFA Membership

Membership in the Junior FFA is open to students in 3rd, 4th, 5th, 6th, and 7th grades

Junior FFA members are required to attend scheduled FFA meetings

Must have a SS#

Junior FFA member parents are encouraged to become members of the Manor FFA Alumni Association

Manor FFA Project Facility

- Only available for Manor FFA/Junior FFA members
- Located past Manor Elementary Early Learning Center and the baseball field
- Exercise/show arena; wash rack area; lockers for storage
- Pen Rental and Barn Contract **MUST** be submitted prior to animals moving into the barn
- More information will be released via the Manor FFA Website
- Barn opens September 13th (hopefully)



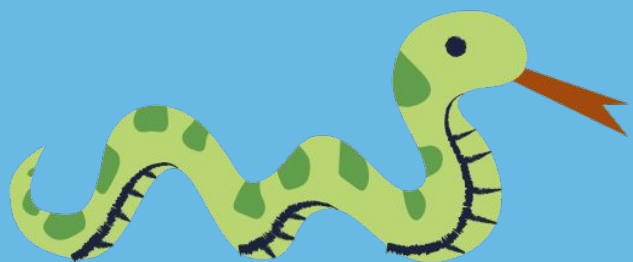
Manor FFA Project Facility

manor.fffanow.org

Animal Projects →

Manor ISD Barn Information

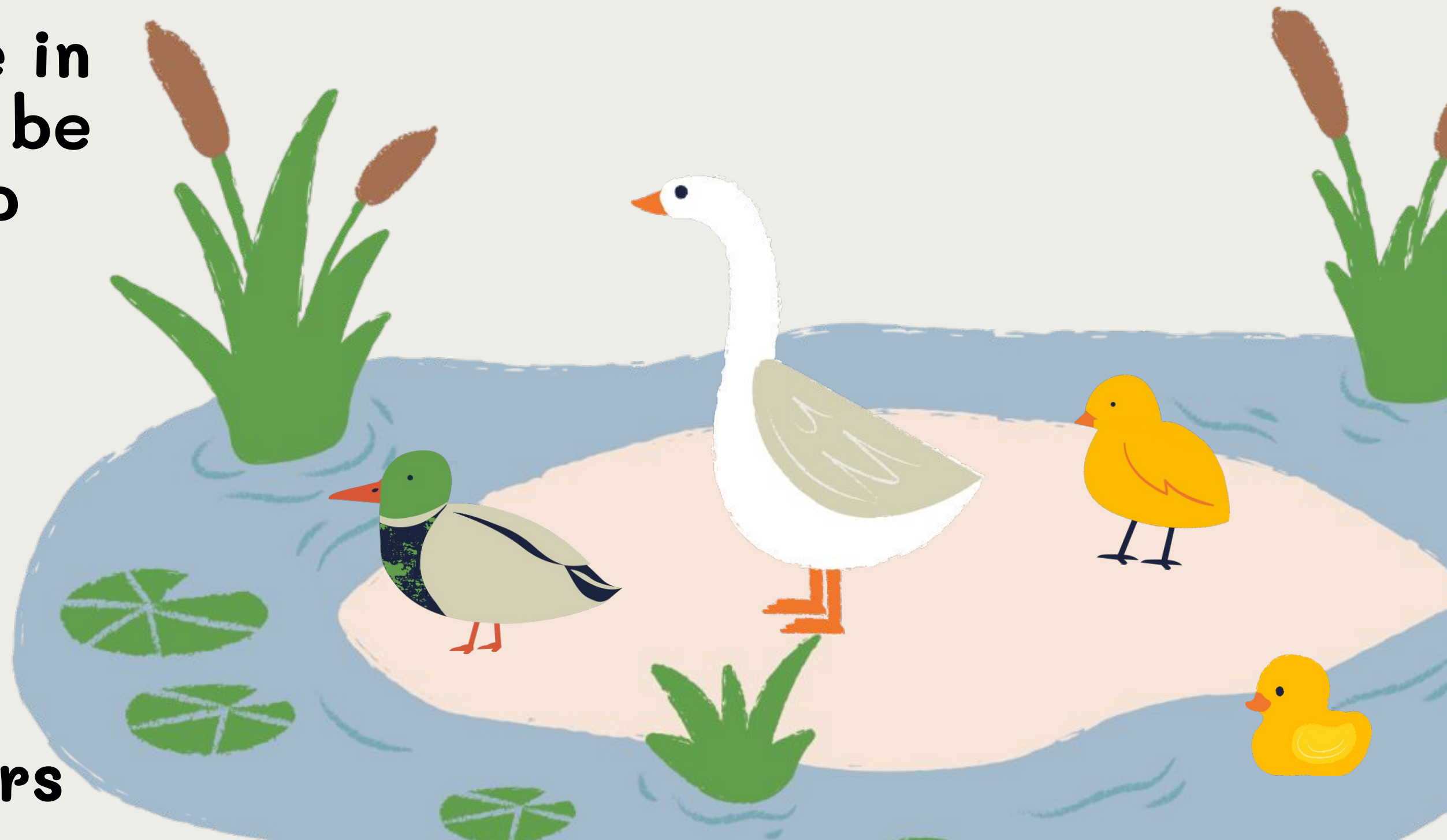
(updated as information becomes available)



No Pass...No Show

- You must be passing for the 6 weeks!
- **These guidelines are in effect and you must be eligible to be able to show.**
- **There are no substitutions for ineligibility.**

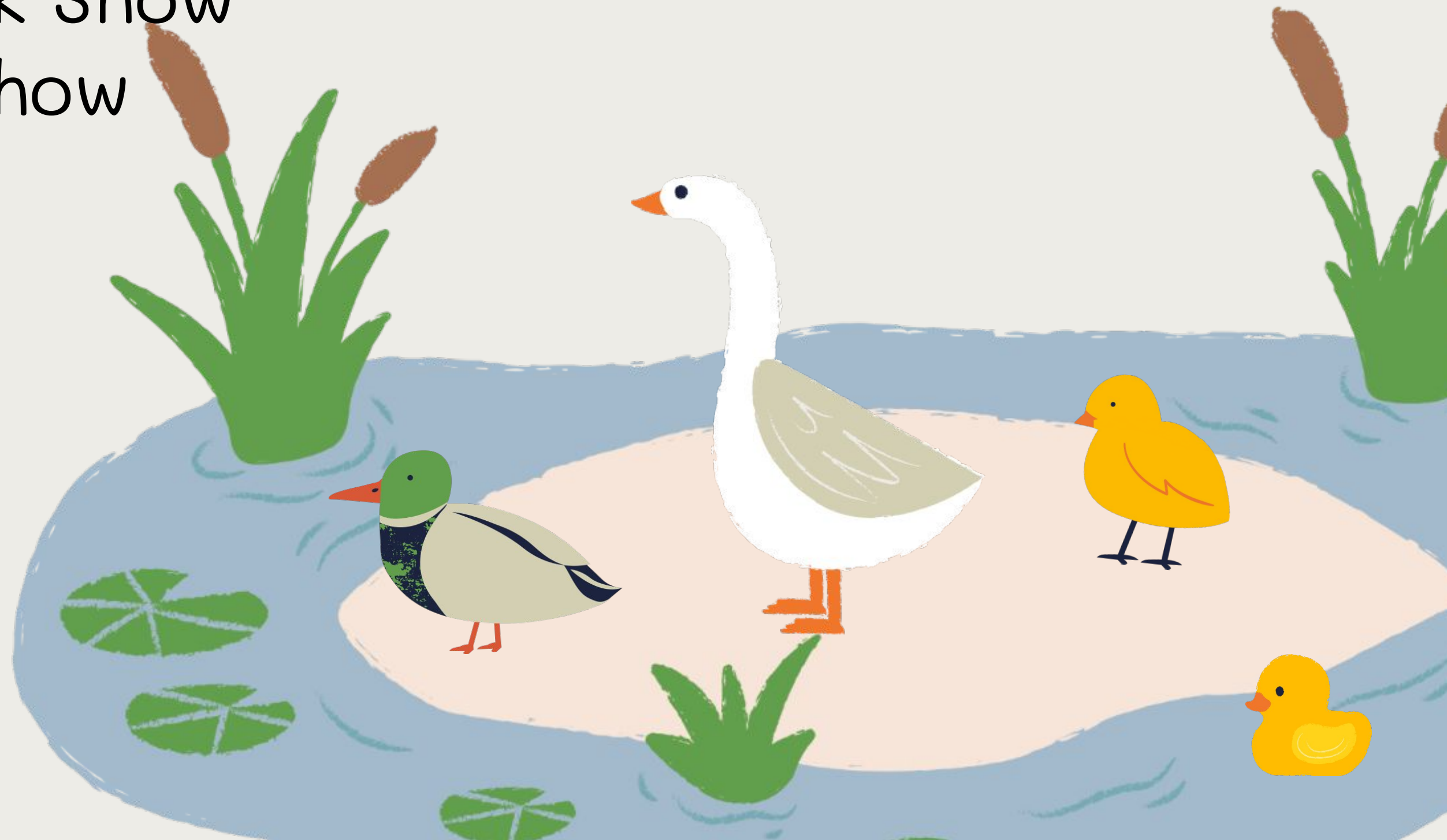
****For ALL FFA members**



2025 Livestock Shows

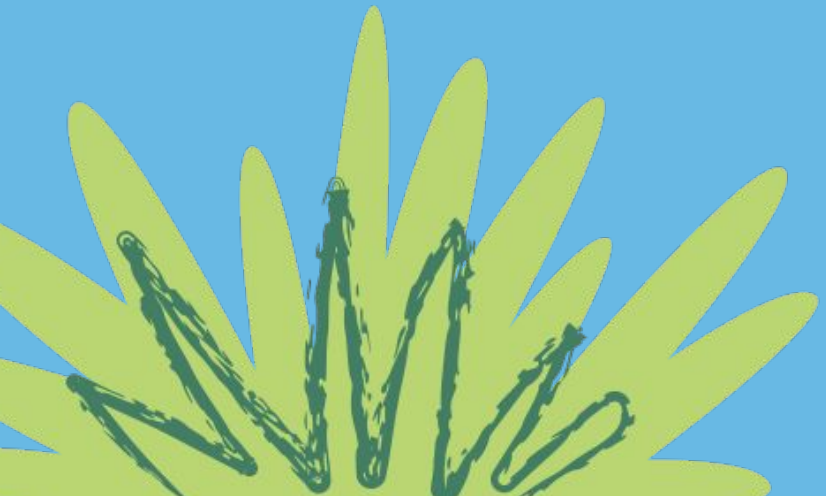
Travis County Youth Show
San Antonio Livestock Show
San Angelo Livestock Show
Houston Livestock Show
Rodeo Austin

**There are no guarantees that there will be a show! This is out of our hands!



TCYS Information

- ✿ **Local county show**
- ✿ **You get (most) animals back after the show**
- ✿ **If a student places high enough, they will participate in the scholarship auction**
 - ✿ You don't sell the animal, you sell your placing
 - ✿ Must have a gift basket for your buyer



TCYS Schedule

⌘ **January 16-18, 2025**

⌘ **The plan is to have a normal show year.**

⌘ **Have a plan in place to haul your own animal if needed!**

⌘ We can't guarantee what teachers will be allowed to do for the show!



Major Show Information



- ✿ **Compete with students from all across the state**

- ✿ **Terminal shows**

- ✿ You won't get your animal back
- ✿ Animal goes to market
- ✿ You get a check for market amount based on weight



Major Show Dates



✿ San Angelo

✿ February 1-16

✿ San Antonio

✿ February 6-23

✿ Houston

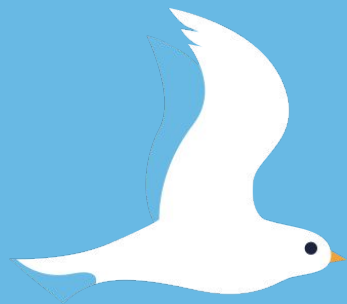
✿ March 4 - March 23

✿ Austin

✿ March 13-29

✿ Dates are subject to change





Quality Counts



<http://qualitycounts.tamu.edu>

All exhibitors are required to complete by
November 1, 2024

Must take as junior (8th grade & below) and as senior
(9th-12th grade)

MANDATORY FOR ALL SHOWS!



Steers

Cost Range: \$3000 and up

Monthly Feed Cost: \$250 (approx. per head)

- Additional expenses include: halter, feed/water bucket, show stick, show fees, and supplements
- It is too late to show steers this year, but if you are interested in showing steers next year, contact teacher
- 2-5 hours per day involved
- Validation: Summer



Lambs

Cost Range: \$600 and up

Monthly Feed Cost: \$50 (approx. per head)

- Additional expenses include: halter, feed/water bucket, blanket/cover, show fees, and supplements
- Born March-May 2024; Wether Lambs or Ewes
- Medium Wool, Cross, Finewool, Southdown, or Dorper
- Tags: \$30 - Due Sept. 13
- 1-4 hours per day involved
- Validation: October

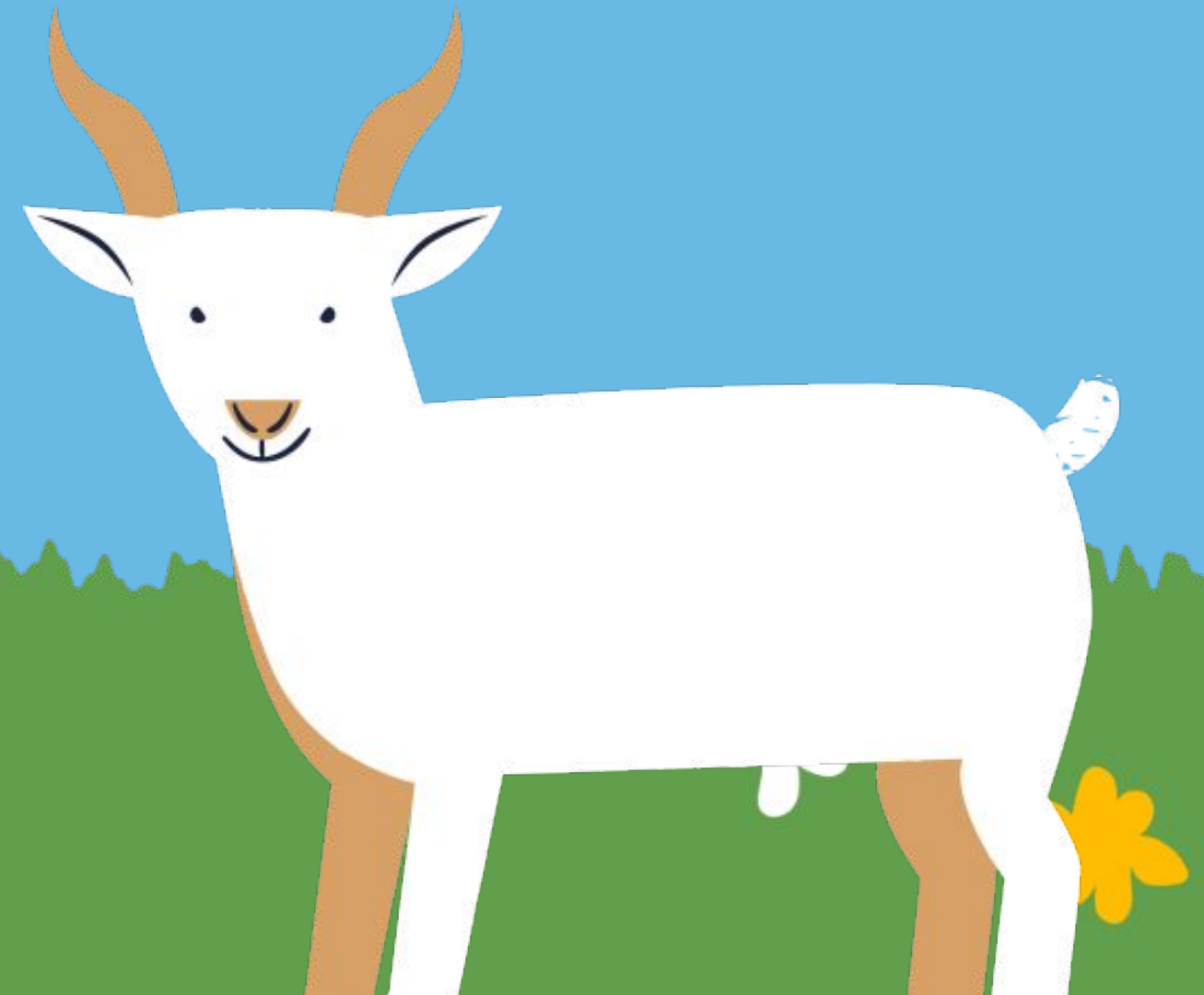


Goats

Cost Range: \$600 and up

Monthly Feed Cost: \$50 (approx. per head)

- Additional expenses include: halter, feed/water bucket, blanket/cover, show fees, and supplements
- Born January-June 2024
- Boer Cross or Full Blood Boer
- Tags: \$30 - Due Sept. 13
- 1-4 hours per day involved
- Validation: October



Swine

Cost Range: \$500 and up

Monthly Feed Cost: \$200 (approx. per head)

- Additional expenses include: whip, feed/water bucket, shavings, show fees, and supplements
- Born June-September 2024; July 1 or later for major show gilts
- Hampshire, Duroc, Yorkshire, Chester White, Poland China, Spotted Poland China, Berkshire, Crossbred/Dark Crossbred
- Tags: \$20 - Due Sept. 13
- 1-4 hours per day involved
- Validation: November

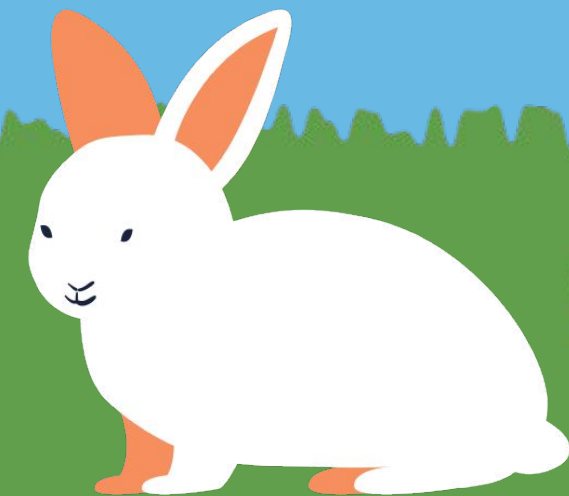


Rabbits

Cost Range: \$275 for the pen of 5

Monthly Feed Cost: \$50

- Commitment by Sept. 25; \$100 deposit to breeder by Sept. 30
- Additional expenses include: feed/water bowls, cage, show fees, hay, and supplements
- Must be under 70 days of age at show and weigh 3.5-5.5 lbs.
- Can be Californian or New Zealand (we will show Californians)
- Rabbits are kept at your home in Travis County!
- 1-3 hours per day involved
- Validation: December

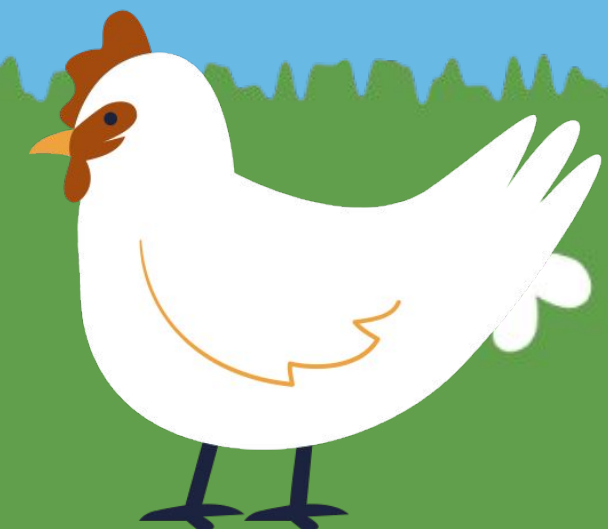
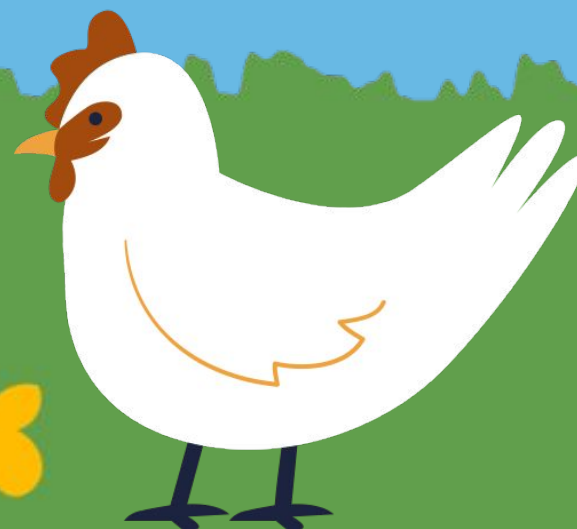
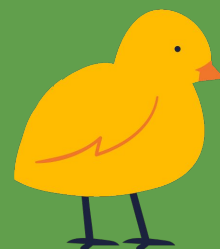


Broilers

Cost Range: \$50 and up (order in boxes of 25)

Feed Cost: \$500 and up

- Max: TCYS 75 per exhibitor; Majors 75 per family (You show 3!)
- Additional expenses include: feeders, waterers, shavings, show fees, and supplements
- TCYS Orders due Oct. 11; Major Orders due Sept. 13
- Chickens may be raised in the barn with a maximum of 25 birds/pen
- 1-3 hours per day involved
- TCYS Pick Up: December



Helpful Websites

www.traviscountyyouthshow.org

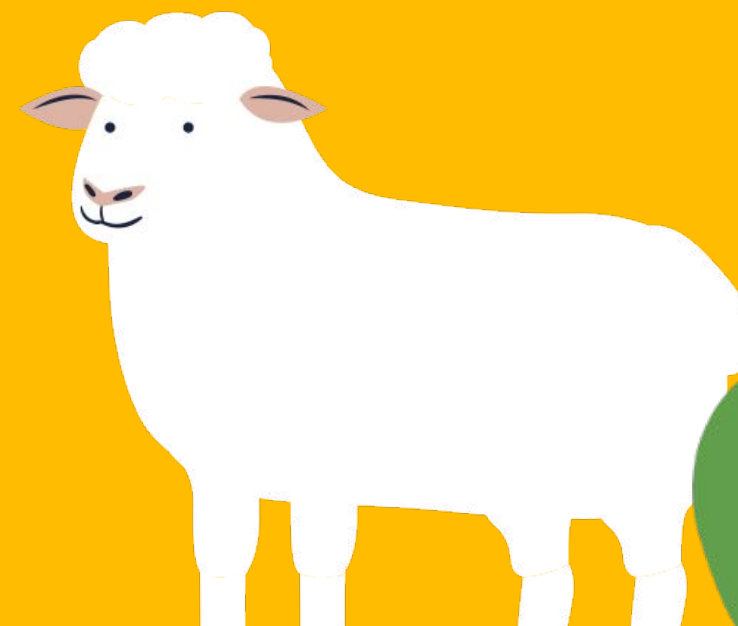
www.rodeohouston.com

www.rodeoaustin.com

www.sarodeo.com

www.sanangelorodeo.com

manor.ffanow.org





MISD
Ag Project
Facility

Take PRIDE in the Barn!

**It is a part of Manor ISD
and the Manor Community!**

**It is a representation of
our chapter and what we**



**Make sure you read the
barn rules.**

There are some changes.

**Students will be held to
these standards.**

**All school rules and dress
code apply at the barn as
well as at the show.**

Be professional at all times!

**You never know when you
will be talking to your**



**Gates need to be CLOSED
at all times!**

**Make sure you shut doors
COMPLETELY!**

**you, as a student, cannot make it to the
rn to feed your animal, please email Ag
achers for permission to have someone
else feed for you!**

**It is your responsibility to feed - not a
teacher, friend, or parent!**

**Keep the barn clean for both
our students and our animals!**

**Animals can get sick from eating
other animals' trash - including old
feed and feed sacks!**

**All feed, manure, hay, shavings, etc.
MUST be put in the dumpster.**

**Do not put it in the trash cans
or wheelbarrow for someone
else to clean up.**

The speed limit is 15 MPH.

Remember that your actions are viewed by others constantly and associated with our organization.

Be considerate of others.

**PEN RENT and VALIDATION
TAG FEES are due before
an animal is moved into the barn.**

These are paid via RevTrak.

ur pen is YOUR

responsibility - not your friend or parent

Keep it clean to help ensure

our success and the success of others

Your animal is counting on y

for a clean place to li

leave other people's possessions alone

If it's not yours, don't touch it!

Visitors are not allowed at the barn!

(This includes your friends.)

If you have requested assistance from

someone besides the Ag Teachers,

please notify the Ag Teachers via email

and **MUST** do this in person.

**YOU are expected to care for
your animal EVERY DAY!**

~Feed~Water~Exercise~

**Feed needs to be kept in a
dry, varmint-proof container.**

Watch for unwanted critters!

(snakes, mice, rats, etc.)



**You are responsible for
all costs associated with your animal
including feed, vet bills, and medication**



**School owned equipment
will need to be checked out
with an Ag Teacher.**

Three-Strike Policy

Strike 1: Warning Letter

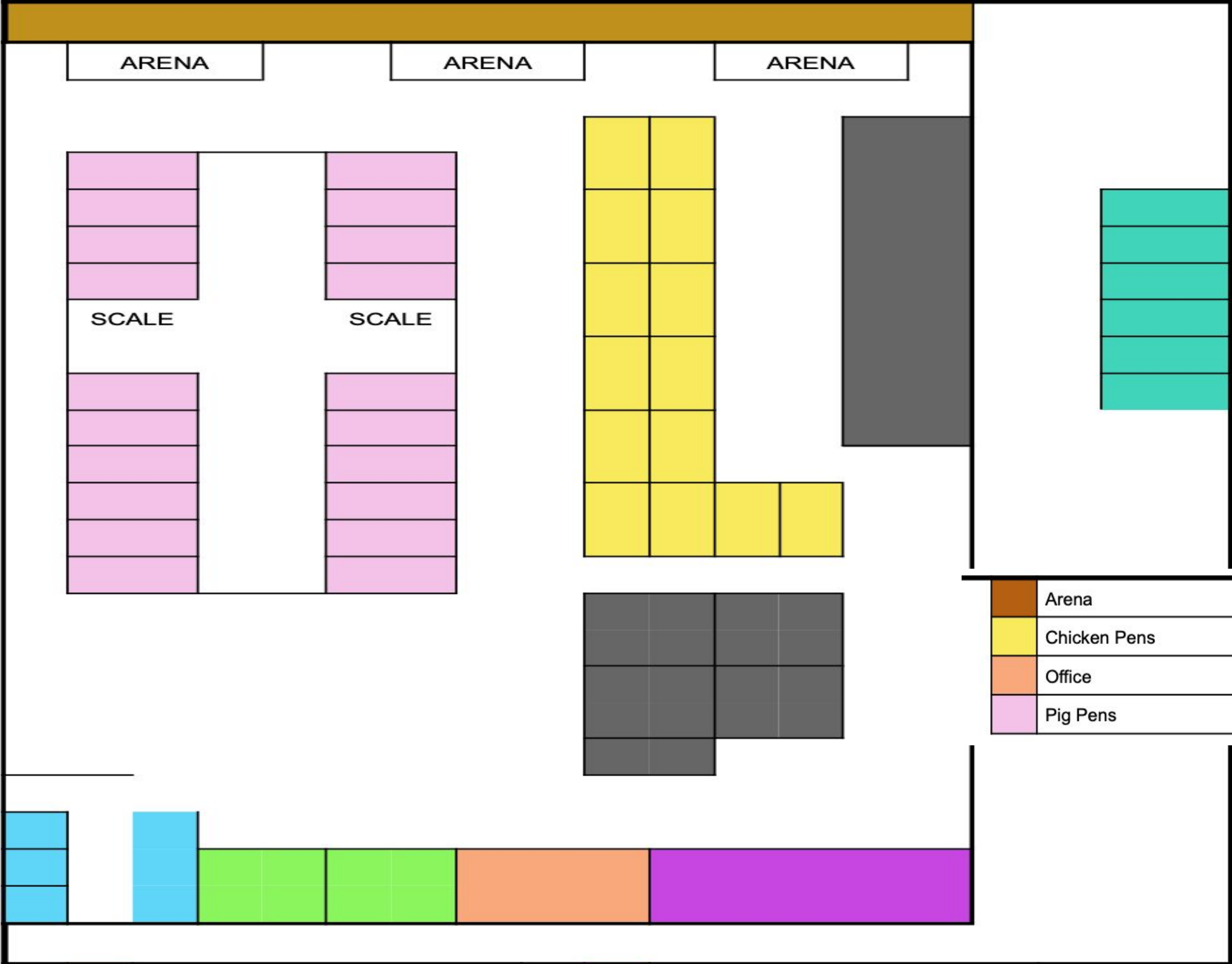
Strike 2: Letter sent home to be signed

Strike 3: Removal from barn

**If you see something,
say something!**

**This means tell a teacher,
not students or parents
that aren't involved in the situation.**





	Arena		Restrooms
	Chicken Pens		Sheep/Goat Pens
	Office		Storage
	Pig Pens		Wash Rack

